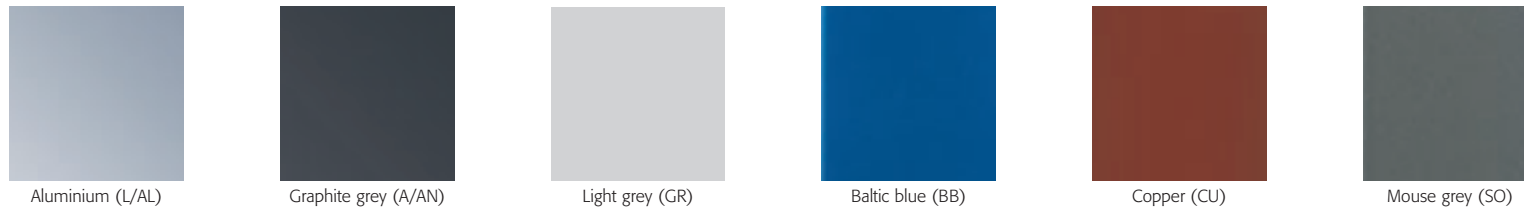
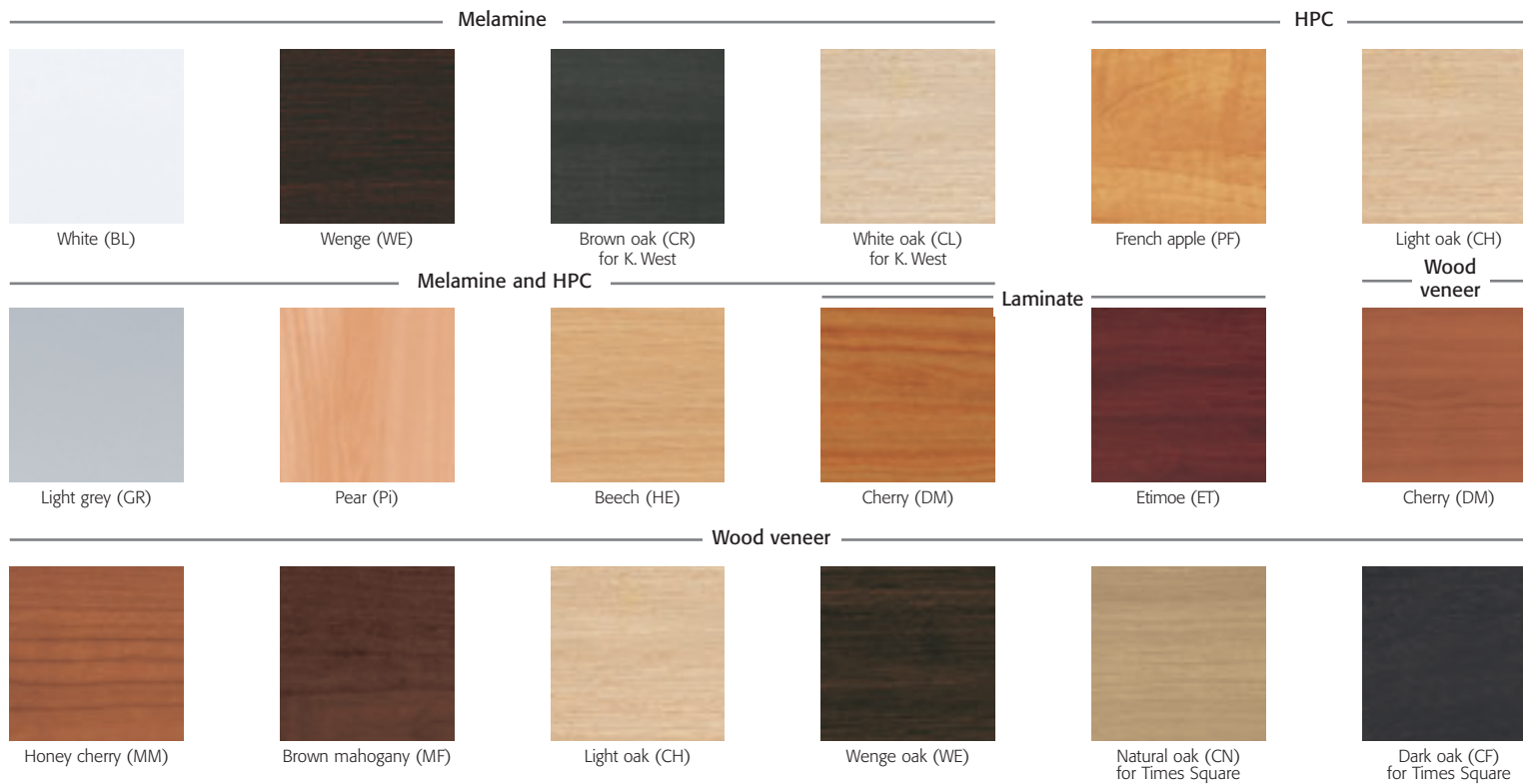


structure and trim



desktops



Shade card - fabrics for screens and desktop screens

FIJI and LUCIA fabrics



Specifications

Range	Composition	Weight	Resistance** to abrasion (no. of revolutions)	Light fastness***	Flammability	Maintenance*
FIJI LUCIA	100% polyester	260 gr/m ²	+ 50,000	6	EN 1021-1 cigarette EN 1021-2 match BS 7176 : 1995	①

Range	Composition	Weight	Resistance** to abrasion (no. of revolutions)	Light fastness***	Flammability	Maintenance*
DARK	100% polypropylene	270 gr/m ²	+ 35.000	5	EN 1021-1 cigarette EN 1021-2 match	①
ASTRID	100% polyester	265 gr/m ²	+ 50.000	5	EN 1021-1 cigarette EN 1021-2 match	①
ASTRID M	100% polyester	290 gr/m ²	+ 50.000	5	EN 1021-1 cigarette EN 1021-2 match	①
KING	100% polyester trevira CS	290 gr/m ²	+ 40.000	5	EN 1021-1 cigarette EN 1021-2 match M1 - unflammmable	①
BISONTE	64% cotton 36% polyurethane	300 gr/m ²	+ 65.000	5/6	EN 1021-1 cigarette	②
GLOBE	100% polyester	465 gr/m ²	+ 80.000	5	EN 1021-1 cigarette EN 1021-2 match	①
XTREME PLUS	100% polyester Xtreme FR	310 gr/m ²	+ 100.000	6	EN 1021-1 cigarette EN 1021-2 match M1 - unflammmable BS 7176 CRI B5	①
GAJA 2	100% wool	375 gr/m ²	+ 50.000	5	EN 1021-1 cigarette EN 1021-2 match M2 - flame retardant BS 5852 CRI B5	①

fabrics *maintenance

- ① Vacuum regularly. Clean with a damp sponge or a perchlorethylene solution.
- ② Soak up stains using an absorbent tissue such as Scottex, then clean with a damp white cloth (soaked in 50% water, 50% alcohol) or a suitable ammonia-based product.

tests **resistance to abrasion

- Over the course of time, fabrics become worn as a result of friction.
- The Martindale test makes it possible to measure a fabric's resistance to friction.
- During this test, a machine performs a series of revolutions to replicate the effect of friction and calculates the number of revolutions completed before the fabric's thread is broken.

tests ***light fastness

- After prolonged exposure to light, fabrics have a tendency to become discoloured.
- Light fastness tests make it possible to measure a colour's resistance to light.
- Light fastness is measured in accordance with UNI standards on a scale of values ranging from 1 (minimum resistance) to 7 (maximum resistance).

6% price increase on RRP from 1/08/08 due to world-wide increases in cost of raw materials



Set of castors for use on hard floors
5 castors per set.

ø 50 mm	A ASKRD50	£ 12
ø 65 mm	A ASKRD65	£ 12



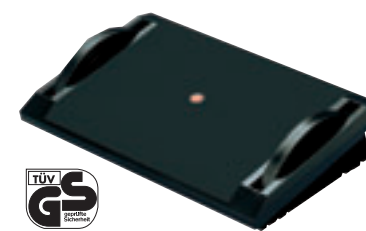
Stain repellent spray
350 ml. For lasting protection against stains and dust. Apply only to new or very clean surfaces.

A ASBP	£ 13
--------	------



Protective floor mat
Made from 2 mm thick polycarbonate. Non-slip underside.

For carpeted floors - 2 sizes :		For hard floors - 2 sizes :	
122 x 90 cm	A TS1Q	£ 62	122 x 90 cm A TS1D
152 x 120 cm	A TS2Q	£ 93	152 x 120 cm A TS2D



De luxe footrest
W x D cm : 54 x 35. 3 height settings (6, 9 or 12 cm). Non-slip platform. Available in 2 colours : light grey (GR) or black (NR).

A RP1 + col.	£ 47
--------------	------



Economy footrest
Non-slip platform, W x D cm : 39 x 10, in ribbed plastic. 3 height settings (7, 9 or 11 cm). Total height : 18 cm. Anti-slip feet. Available in 2 colours : light grey (GR) or black (NR).

A RP2 + col.	£ 31
--------------	------

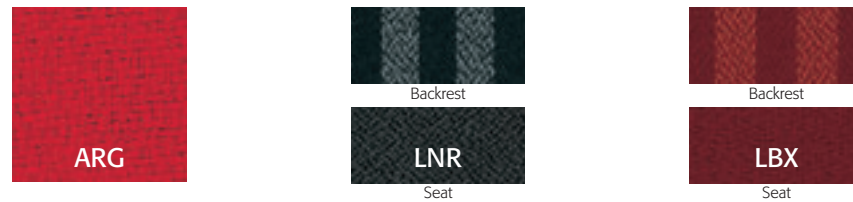


fabrics **CATEGORY A**

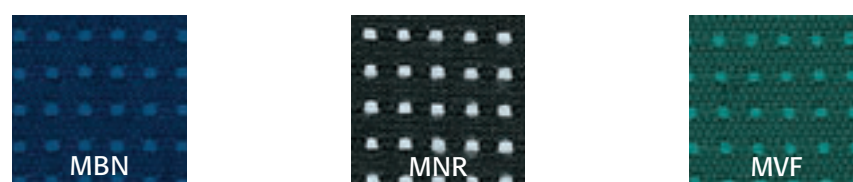
DARK



ASTRID



ASTRID M



fabrics **CATEGORY B**

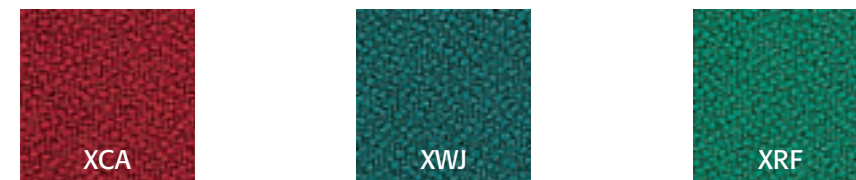
KING



BISONTE



XTREME PLUS



GLOBE



fabrics **CATEGORY C**

GAJA 2

